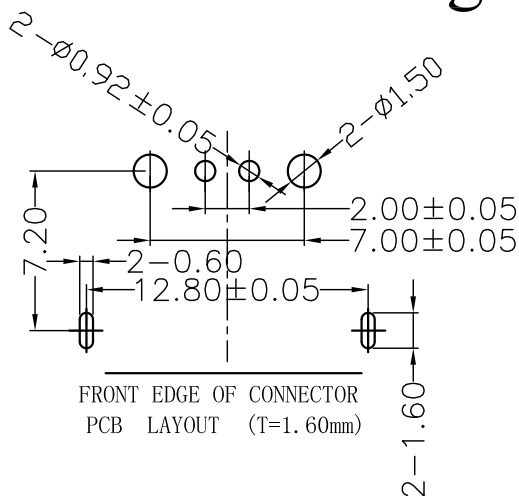
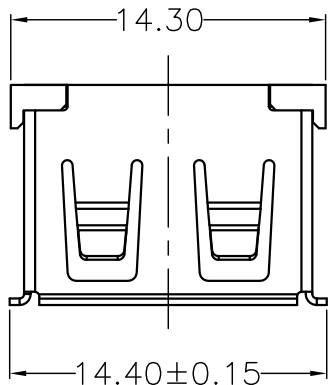


Parts Drawing

REVISIONS

SYM	ECN No.	MODIFICATION	DATE	ISSUED



FRONT EDGE OF CONNECTOR
PCB LAYOUT (T=1.60mm)

Note:

1.Material:

- 1.1,Housing: High temperature thermoplastic with/black g.f,UL94v-0
- 1.2,Contact: copper alloy,t=0.25mm
- 1.3,Shell: copper/Ferroalloy alloy,t=0.30mm

2.Specification:

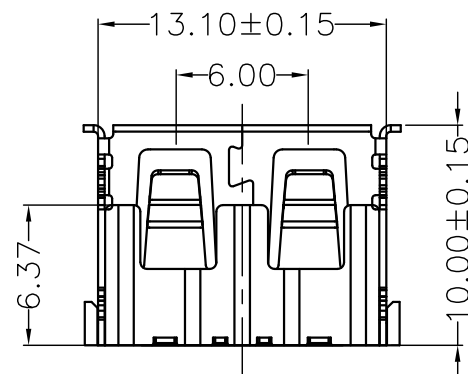
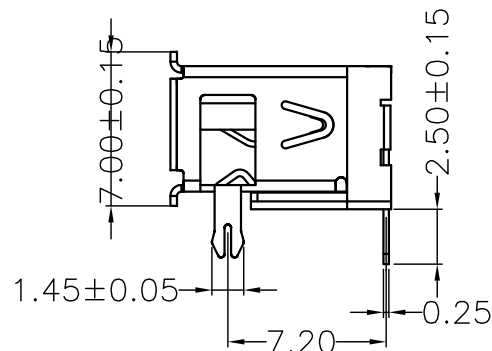
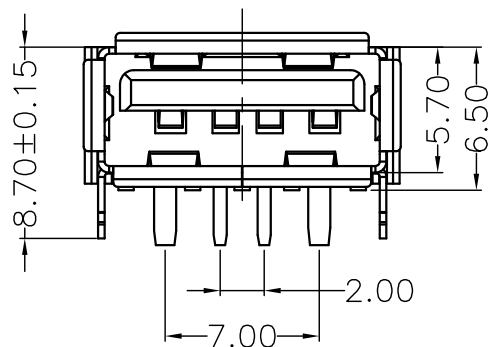
- 2.1,Current rating:1.5A Max.
- 2.2,Dielectric withstanding voltage: 100 V(ac) for 1 min.
- 2.3,Contact resistance: 30 mΩ Max.
- 2.4,Insulation resistance: 100 MΩ Min.
- 2.5,Total mating force: 3.57 Kgf Max.
- 2.6,Total unmating force: 1.0 Kgf Min.

3.Finish:

- 3.1,Contact: Plated Golt in Mating Area:
Tin On Solder Talls
- Shell: Nickel Plating

4.Environmental:

- 4.1,Temperature range: -55°C~85°C



1	919-152A1092D10200	1	
2		2	
3		3	
4		4	

DRAWN



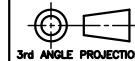
CHECKED

TITLE
AF10.0D款大电流前两脚
有边铜壳PBT绿胶DIP-H6.5

PART NO.
A919-EC152A1092D10200

APPROVED

DRAWING NO.
R918151A1012D211



UNIT
mm

TOLERANCE
.XXX±.10, .XX±.25, .X±.38, ANG±5°

SCALE	SHEET	SIZE	REV.
1:1	1 OF 1	A4	X1