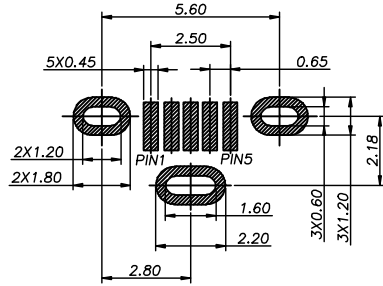
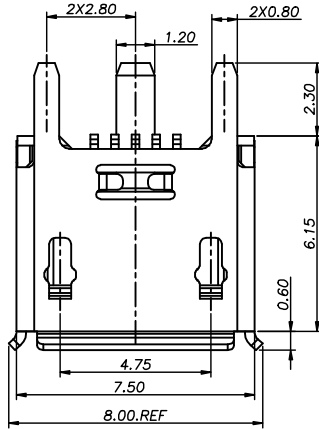


RoHS

MAPX

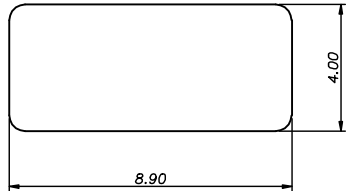
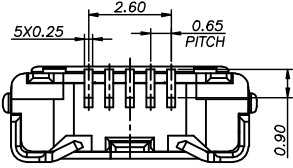
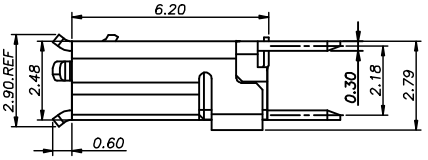
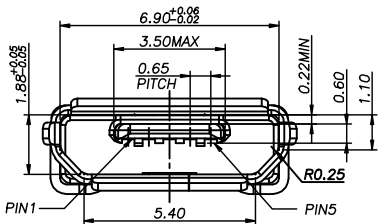
MODIFICATION

DATE

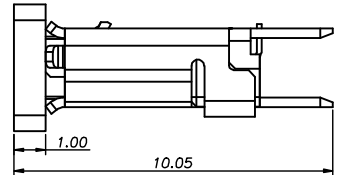


RECOMMENDED PCB LAYOUT(TOP VIEW)
GENERAL TOLERANCES:±0.05

- NOTE:
- MATERIAL SPECIFICATION:
 - 1-1.HOUSING:LCP; UL94 V-0 BLACK.
 - 1-2.CAP:LCP; UL94 V-0 BLACK.
 - 1-3.CONTACTS: BRASS .
 - 1-4.FRONT SHELL: STAINLESS STEEL
 - PLATING SPECIFICATION:
 - 2-1.CONTACTS:
Ni 50u" MIN. UNDER PLATED OVER ALL.
Au1u"MIN PLATED ON THE FUNCTIONAL AREA OF CONTACT.
 - 2-2.FRONT SHELL:
Ni 30u" MIN. UNDER PLATED OVER ALL.
 - MECHANICAL PERFORMANCE,
 - 3-1.INSERTION FORCE: 3.5Kgf MAX
 - 3-2.REMOVAL FORCE: 0.8kgf MIN
 - 3-3.DURABILITY: 10000 CYCLES.
 - ELECTRICAL PERFORMANCE,
 - 4-1.CURRENT RATING:
VBUS & GND PINS: 1.8A MAX.
OTHER PINS: 0.5A MAX.
 - 4-2.INSULATION RESISTANCE: 100MΩ MIN
 - 4-3.DIELECTRIC WITHSTAND VOLTAGE,AC 100V FOR 1 MINUTE.



CAP DIMENSION SKETCH MAP



5	GND
4	ID
3	D+
2	D-
1	VBUS
PIN	NAME
PIN ASSIGNMENT	

<p>产品图 PRODUCT CHART DWG</p>				<p>易芯精密科技(浙江)有限公司 Easychips Precision Technology (Zhejiang) Co.,Ltd.</p>			
<p>公差一览表 TOLERANCE UNLESS OTHERWISE</p>				<p>单位 UNITS</p>	<p>MM</p>	<p>制图 DRAWING</p>	<p>制图料号 PRODUCT PART NO.</p>
X.	±0.35	X.	±5.°	比例 SCALE	1:1	审核 CHKD	B920-EC154A2021Y10106
.X	±0.20	.X	±2.°	日期 DATE	2018-09-08	核准 APPD	产品名称 PRODUCT NO.
.XX	±0.10	.XX	±1.°			角法 VIEW	MICRO 5P/7脚插板间距 10.05/6.75插板间距 LCP 插板 SMT+ 插板
.XXX	±0.05	.XXX	±0.5°			版本 VER	A0