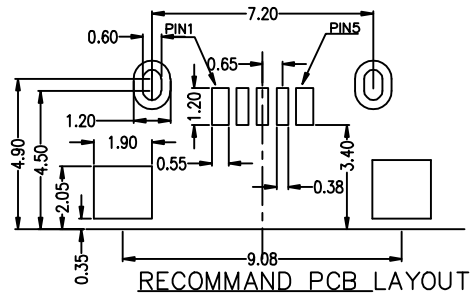
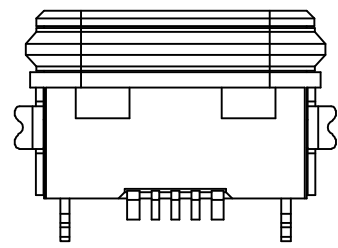
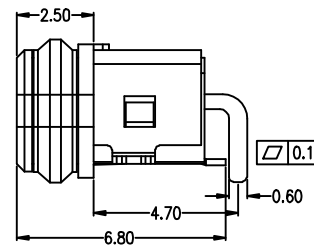
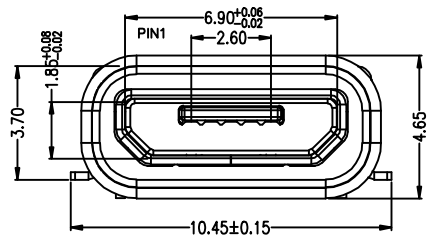
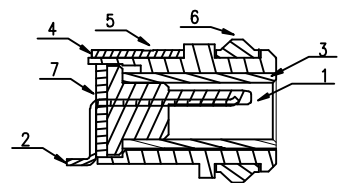
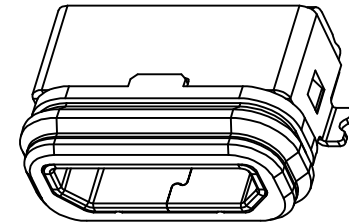
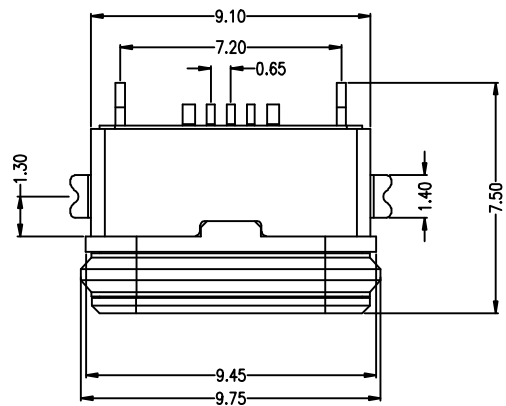


7	8	9	10
MAPX	MODIFICATION		DATE



- Note:
- 1.Material:
- 1.1 Housing: High temperature thermoplastic
  - 1.2 Contact: copper alloy,t=0.20mm
  - 1.3 Shell: SUS304,t=0.30mm
  - 1.4 cover: High temperature thermoplastic
  - 1.5 out Shell: SUS304 T=0.25
  - 1.6 Ring: SILICON
  - 1.7 Epoxy: Epoxy
- 2.Specification:
- 2.1 Current rating:1,5PIN 2.0A Max/2,3,4PIN 1A Max.
  - 2.2 Dielectric withstanding voltage: 100 V(ac) for 1 min.
  - 2.3 Contact resistance: 30 mΩ Max.
  - 2.4 Insulation resistance: 100 MΩ Min.
  - 2.5 Total mating force: 3.57 Kgf Max.
  - 2.6 Total unmating force: 1.0 Kgf Min.
  - 2.7 Temperature range: -30°C~80°C
  - 2.8 Waterproof: IPX 7.

<b>产品图</b> PRODUCT CHART DWG		<b>易芯精密科技(浙江)有限公司</b> Easychips Precision Technology (Zhejiang) Co., Ltd.			
公差一览表 TOLERANCE UNLESS OTHERWISE		单位 UNITS	MM	制图 DRAWING	制图料号 PRODUCT PART NO.
X.	±0.30 X. ±5.°	比例 SCALE	1:1	审核 CHECK	B920-ECA64A2021S101A0
.X	±0.25 .X ±2.°	日期 DATE	2019. 11. 23	核准 APPRO	产品名称 PRODUCT NO.
.XX	±0.15 .XX ±1.°	角法 VIEW		版本 VER	HB20 EP10 连接器系列A 1000系列连接器
.XXX	±0.10 .XXX ±0.5°				A0