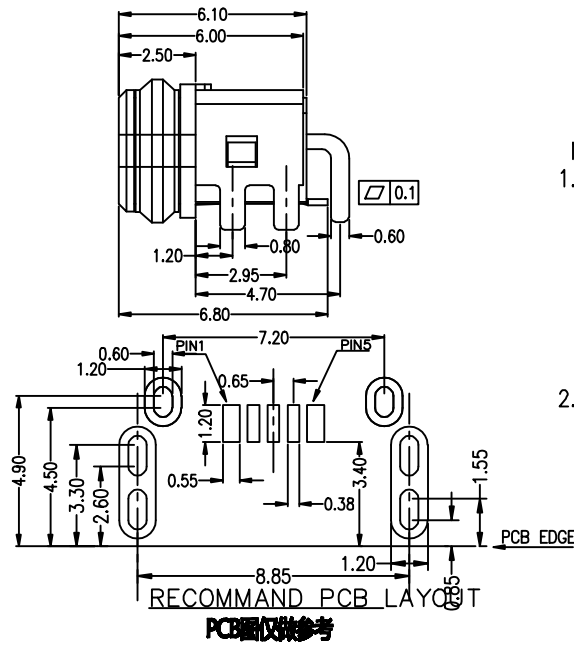
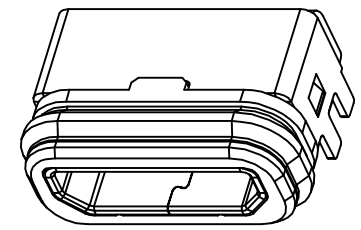
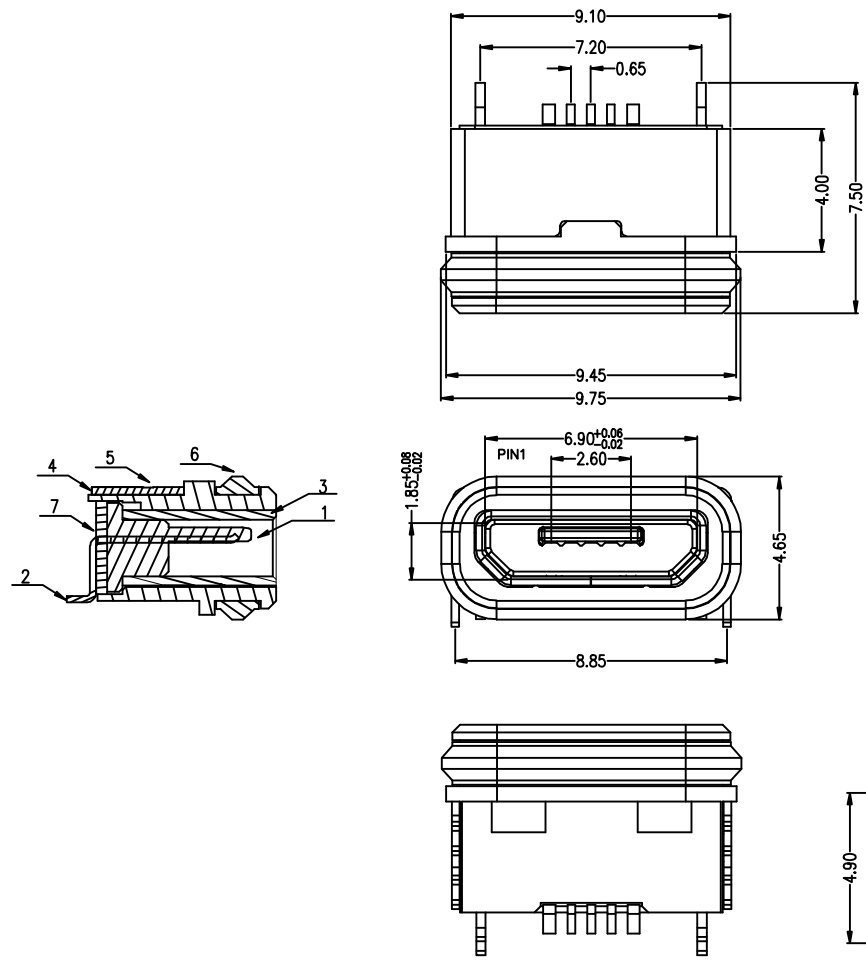


7	8	9	10
MAPX	MODIFICATION		DATE



- Note:
- Material:
    - Housing: High temperature thermoplastic
    - Contact: copper alloy, t=0.20mm
    - Shell: SUS304, t=0.30mm
    - cover: High temperature thermoplastic
    - out Shell: SUS304 T=0.25
    - Ring: SILICON
    - Epoxy: Epoxy
  - Specification:
    - Current rating: 1,5PIN 2.0A Max/2,3,4PIN 1A Max.
    - Dielectric withstanding voltage: 100 V(ac) for 1 min.
    - Contact resistance: 30 mΩ Max.
    - Insulation resistance: 100 MΩ Min.
    - Total mating force: 3.57 Kgf Max.
    - Total unmating force: 1.0 Kgf Min.
    - Temperature range: -30°C~80°C
    - Waterproof: IPX68.

<b>产品图</b> PRODUCT CHART DWG		<b>易芯精密科技(浙江)有限公司</b> Easychips Precision Technology (Zhejiang) Co., Ltd.		<b>制图料号</b> PRODUCT PART NO. B920-ECA64A2021S101A1	
<b>公差一览表</b> TOLERANCE UNLESS OTHERWISE		<b>单位</b> UNITS MM	<b>比例</b> SCALE 1:1	<b>制图</b> DRAWING	<b>审核</b> CHECK
X.	±0.30 X.	±5.°	<b>日期</b> DATE 2019. 11. 23	<b>核准</b> APPD	<b>产品名称</b> PRODUCT NO. MICRO SPIN 防水1.1大电流端子连接器
.X	±0.25 .X	±2.°			
.XX	±0.15 .XX	±1.°			
.XXX	±0.10 .XXX	±0.5'			<b>角法</b> VIEW
					<b>版本</b> VER
					<b>图号</b> A0