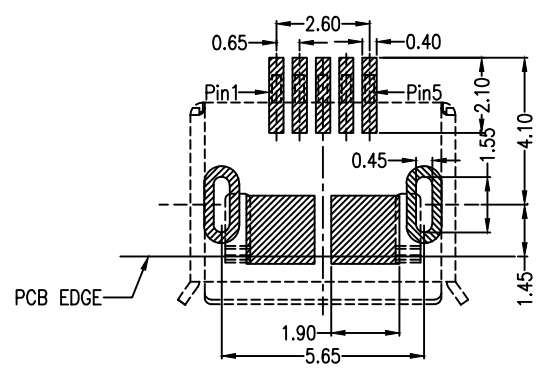
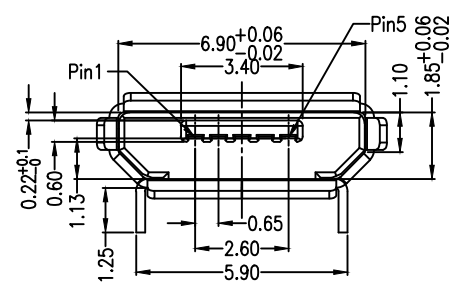
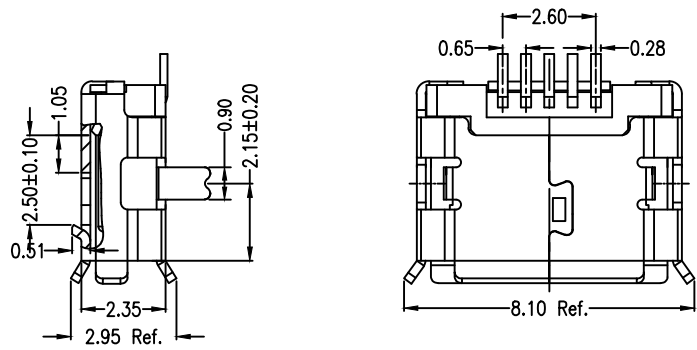
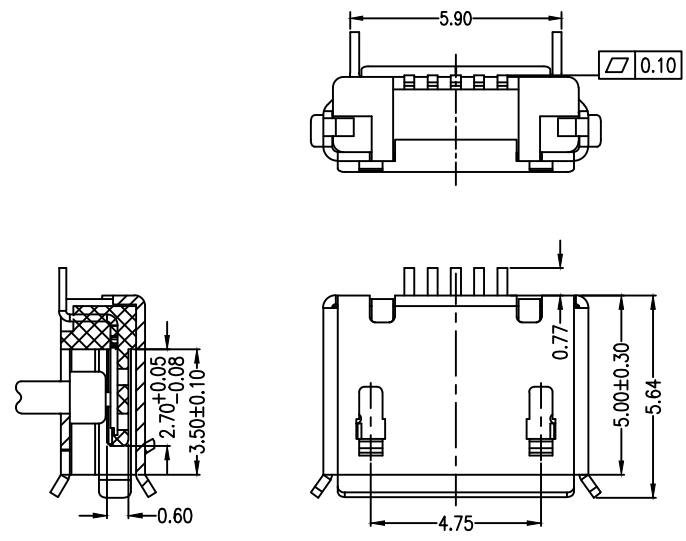


MAPX	MODIFICATION	DATE



RECOMMENDED PCB LAYOUT
PCB图仅供参考

Note:
 1.Material:
 1.1 Housing: High temperature thermoplastic with g.f,UL94v-0
 1.2 Contact: copper alloy,t=0.20mm
 1.3 Shell: copper alloy,t=0.25mm
 2.Specification:
 2.1 Current rating:1.5PIN 1.8A Max/2,3,4PIN 1A Max.
 2.2 Dielectric withstanding voltage: 100 V(ac) for 1 min.
 2.3 Contact resistance: 30 mΩ Max.
 2.4 Insulation resistance: 100 MΩ Min.
 2.5 Total mating force: 3.57 Kgf Max.
 Total unmating force: 1.0 Kgf Min.
 Temperature range: -30°C~80°C

产品图 PRODUCT CHART DWG		易芯精密科技(浙江)有限公司 Easychips Precision Technology (Zhejiang) Co., Ltd.			
公差一览表 TOLERANCE UNLESS OTHERWISE		单位 UNITS	MM	制图 DRAWING	制料号 PRODUCT PART NO.
X.	±0.30	X.	±5.°	审核 CHKD	产品名称 PRODUCT NO.
.X	±0.25	.X	±2.°		
.XX	±0.20	.XX	±1.°	核准 APPD	角法 VIEW
.XXX	±0.10	.XXX	±0.5°		
日期 DATE	2019.11.23	版本 VER	AO	制料号 B920-ECC52A2021S10108	产品名称 MICRO SS B型5.9两脚长1.25插板有边无柱 SMT端子加长0.75插板