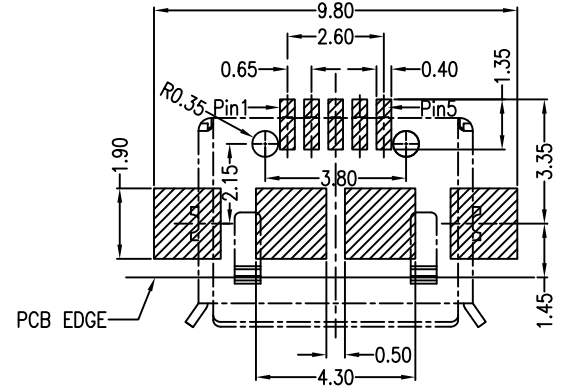
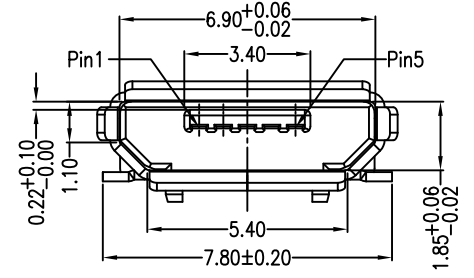
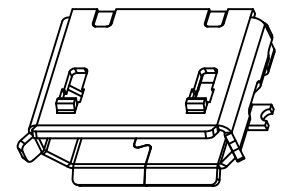
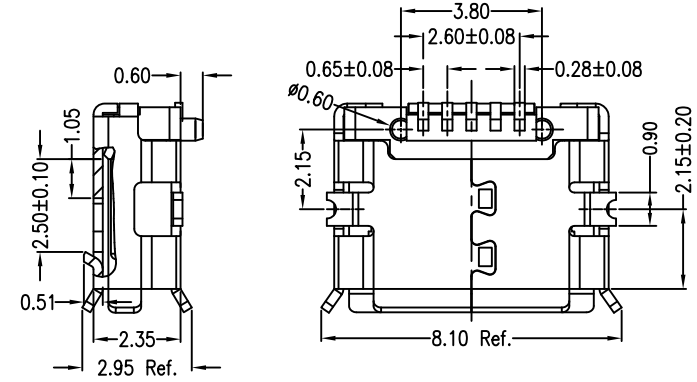
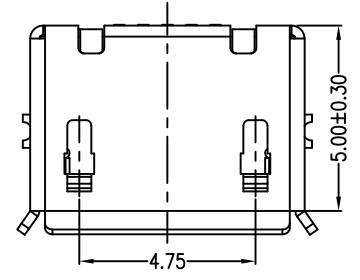
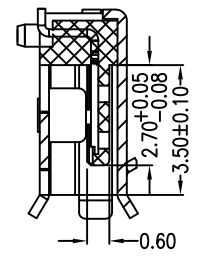
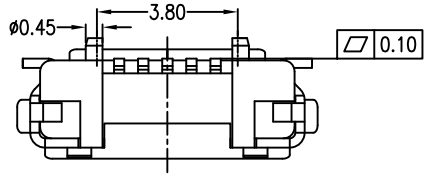


MAPX	MODIFICATION	DATE



RECOMMENDED PCB LAYOUT PCB图仅供参考

- Note:
- Material:
 - Housing: High temperature thermoplastic with g.f,UL94v-0
 - Contact: copper alloy,t=0.20mm
 - Shell: copper alloy,t=0.25mm
 - Specification:
 - Current rating:1,5PIN 1.8A Max/2,3,4PIN 1A Max
 - Dielectric withstanding voltage: 100 V(ac) for 1 min.
 - Contact resistance: 30 mΩ Max.
 - Insulation resistance: 100 MΩ Min.
 - Total mating force: 3.57 Kgf Max.
 - Total unmating force: 1.0 Kgf Min
 - Temperature range: -30°C~80°C

产品图 PRODUCT CHART DWG		易芯精密科技(浙江)有限公司 Easychips Precision Technology (Zhejiang) Co., Ltd.							
公差一览表 TOLERANCE UNLESS OTHERWISE		单位	MM	制图		制图料号	B920-ECD52A2021S101A5		
X.	±0.30	X.	±5.°	比例		产品名称	MICRO SS B型两脚贴板有边有柱间距3.8短端SMT		
.X	±0.25	.X	±2.°	日期	2021-04-16	角法	版本 VER		
.XX	±0.15	.XX	±1.°	日期	2021-04-16	核准	AD		
.XXX	±0.10	.XXX	±0.5°	日期	2021-04-16	APPD			