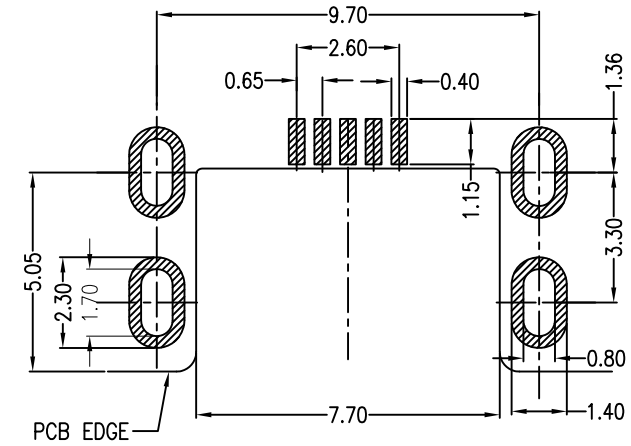
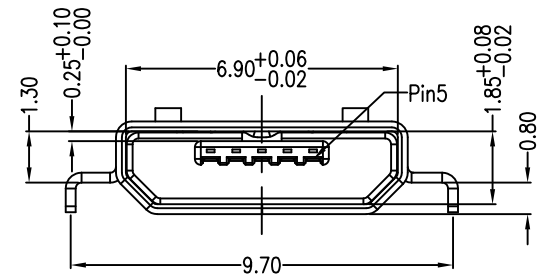
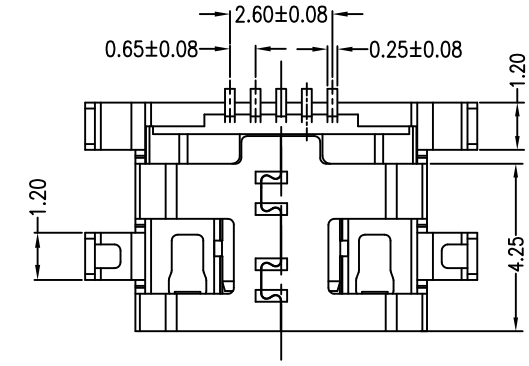
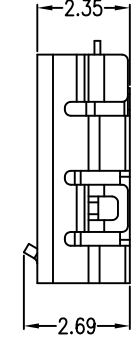
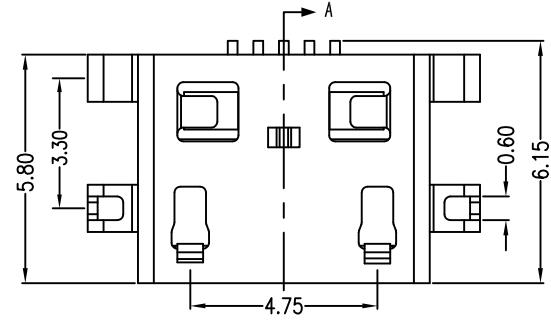
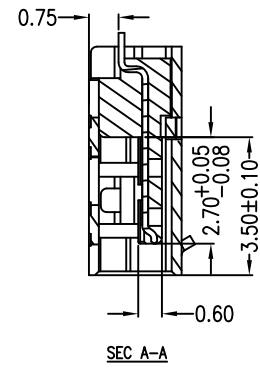
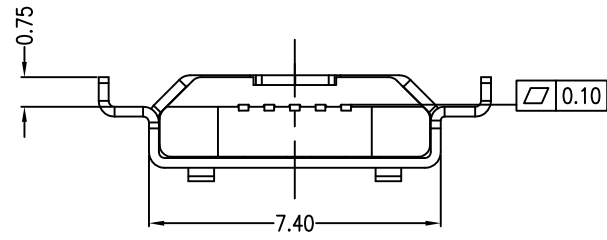


MAPX	MODIFICATION	DATE
------	--------------	------



RECOMMENDED PCB LAYOUT
PCB图仅供参考

- Note:
- Material:
 - Housing: High temperature thermoplastic with g.f,UL94v-0
 - Contact: copper alloy,t=0.15mm
 - Shell: copper alloy,t=0.25mm
 - Specification:
 - Current rating:1,5PIN 1.8A Max/2,3,4PIN 1A Max.
 - Dielectric withstanding voltage: 100 V(ac) for 1 min.
 - Contact resistance: 30 mΩ Max.
 - Insulation resistance: 100 MΩ Min.
 - Total mating force: 3.57 Kgf Max.
 - Total unmating force: 1.0 Kgf Min.
 - Temperature range: -30°C~80°C

产品图 PRODUCT CHART DWG		易芯精密科技(浙江)有限公司 Easychips Precision Technology (Zhejiang) Co.,Ltd.								
公差一览表		单位	MM	制图		制图料号	B920-ECF62A2021S10106			
TOLERANCE UNLESS OTHERWISE		UNITS		DRAWING		PRODUCT PART NO.				
X.	±0.35	X.	±5.°	比例		产品名称	MICRO/5S B型沉板式0.8四脚全插			
.X	±0.30	.X	±2.°	SCALE	1:1	PRODUCT NO.	无导线有孔三边双卡端			
.XX	±0.20	.XX	±1.°	日期	2016-09-09	角法			版本	AD
.XXX	±0.10	.XXX	±0.5°	DATE		VIEW			VER	