

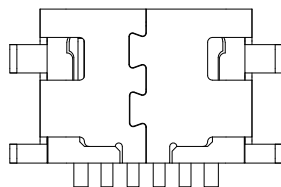
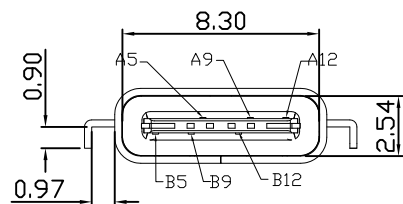
RoHS

MAPX

MODIFICATION

DRW

DATE



B12	GND
B9	VBUS
B5	CC2
A5	CC1
A9	VBUS
A12	GND
PIN	SIGNAL NAME

NOTES:

- 1.MATERIAL:
MOLDING: LCP UL94 V-0
CONTACT: COPPER ALLOY.
GOLD PLATED Min ON CONTACT AREA, 100u"
Min TIN (LEAD FREE) ON SOLDER AREA,
SHELL: SUS304-H,T=0.30±0.03mm
50u" NICKEL PLATING OVER ALL.
- 2.MECHANICAL:
INSERTION: 5~20N.
EXTRACTION: 8~20N AFTER TEST.
DURABILITY: 10000 CYCLES
- 3.ELECTRICAL:
CURRENT: 5A FOR VBUS;
1.25A FOR GND PIN.
0.25A FOR OTHER.
VOLTAGE: 20 V MAX
WITHSTANDING VOLTAGE: 100V AC R.M.S.
CONTACT RESISTANCE: 40mΩ MAX.
INSULATION RESISTANCE: 100MΩ MIN.
- 4.ENVIRONMENTAL
TEMPERATURE RANGE -25°C ~ +85°C
5. 尺寸标注事项:
图示有标⊗ "者为首样全检, 重点管控尺寸,
6. 产品符合RoHS标准

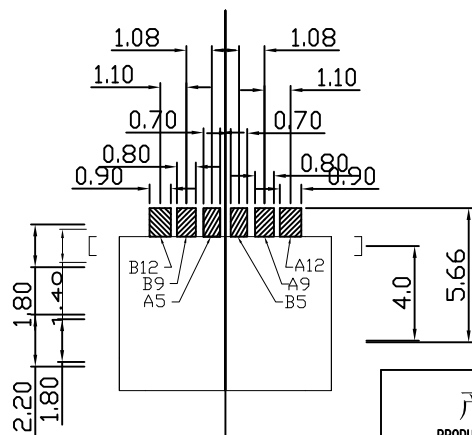
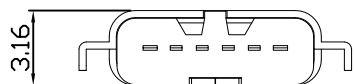
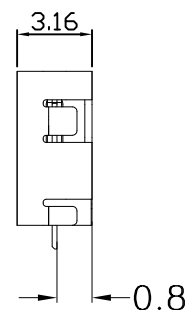
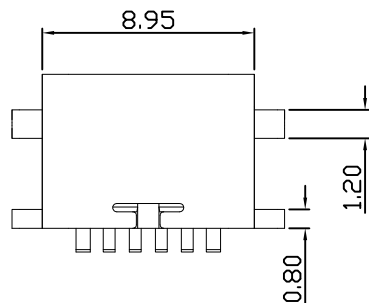
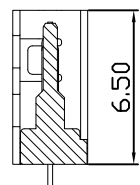


Table:

成品料号	零件名称	零件料号	材料 / 电镀
TX	端子	TX	SUS 304 R-H NO PLATING
	molding半成品	TX	SUS 301 R-H Sn 80~200u"
	外壳	TX	SUS 301 R-H 电镀切料带后.

产品图

PRODUCT CHART DWG

公差一览表

TOLERANCE UNLESS OTHERWISE			
X.	±0.25	X.	±5°
.X	±0.20	.X	±2°
.XX	±0.15	.XX	±1°
.XXX	±0.10	.XXX	±0.5°



易芯精密科技(浙江)有限公司

Easychips Precision Technology (Zhejiang) Co., Ltd.

单位	MM	制图	ZY	制图料号	C918-EC418K2024S40004
UNITS	MM	DRAWING	ZY	PRODUCT PART NO.	C918-EC418K2024S40004
比例	1:1	审核	GR	产品名称	TYPE-C3.1 6PF SMT沉板0.8母座单排短体6.5L
SCALE	1:1	CHKD	GR	PRODUCT NO.	TYPE-C3.1 6PF SMT沉板0.8母座单排短体6.5L
日期	2016-09-09	核准	GT	角法	角法
DATE	2016-09-09	APPD	GT	VIEW	角法
				版本	AO
				VER	AO

由 Autodesk 教育版产品制作

由 Autodesk 教育版产品制作