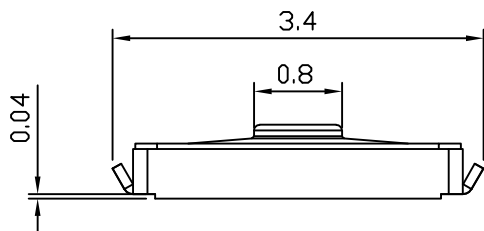


P.C.B LAYOUT



SPECIFICATIONS:

Operating temperature range: -30°C to $+85^{\circ}\text{C}$
 Rating: Max 50 mA 12V DC Min $10\ \mu\text{A}$ 1V DC
 Insulation resistance: $100\text{M}\ \Omega$ min. 100V DC
 Dielectric strength: 100V. AC. 1Min
 Contact resistance: $100\text{m}\ \Omega$ Max
 Life: 100,000 Cycles
 Travel: $0.13 \pm 0.05\text{mm}$
 Operating force: $180 \pm 50\text{gf}$

TOLERANCE				DESIGN	DATE	TITLE	Tact Switch	
UNLESS OTHERWISE STATED				WYJ	2024. 03. 21			
X.X	± 0.20	SIZE	A4	CHKD	DATE	MODEL	ECTAU06-BWN-R	
X.XX	± 0.15	REV	A					
X.XXX	± 0.10	UNIT	mm	APPD	DATE	SHEET	1/3	
\angle	$\pm 2^{\circ}$	SCALE	15:1			PRINT DATE	2024.04.09	