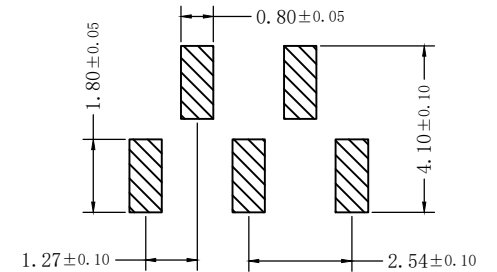
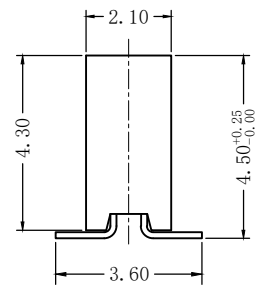
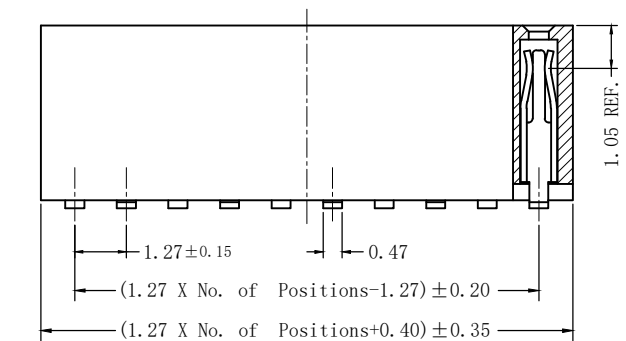
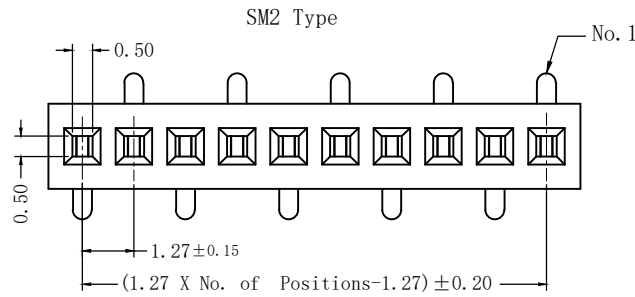
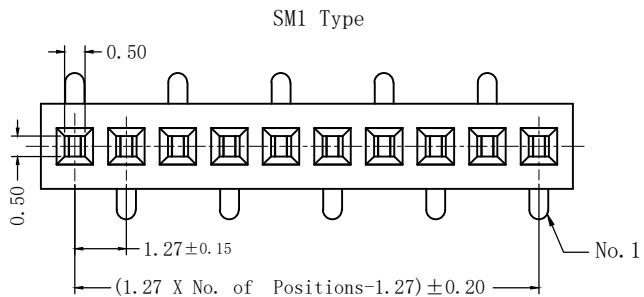
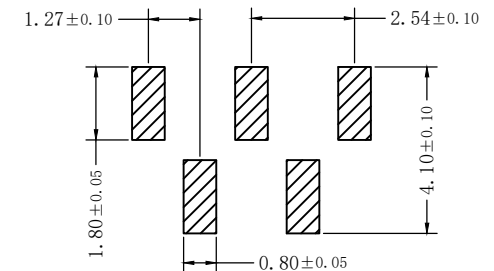


版次	变更内容	审核	日期



Recommended PCB Layout SM1 Type



Recommended PCB Layout SM2 Type

弯曲度: 1\*02P ~ 1\*20P 0.30 MAX.  
 1\*21P ~ 1\*35P 0.40 MAX.  
 1\*36P ~ 1\*50P 0.50 MAX.

技术参数: SPECIFICATIONS

额定电流 (Current Rating): 1A  
 绝缘电阻 (Insulation Resistance): 1000MΩ Min.  
 接触电阻 (Contact Resistance): 20m Ω Max.  
 额定电压 (Dielectric Withstanding Voltage): AC 500V  
 工作温度 (Operating Temperature): -40°C ~ +105°C  
 最大加工温度 (Max Processing Temp): (230°C for 30~60 seconds)  
 (260°C for 10 seconds)  
 接触材料 (Contact Material): 磷青铜(Phosphor Bronze), THICKNESS 0.15mm  
 塑胶材料 (Insulator Material): 尼龙(Nylon)-9T, UL 94V-0, 颜色:黑色  
 接触电镀 (Contact Plating): 镀金 (Gold plated)  
 (电镀规格可根据客户要求来定制)  
 Opitonal planting on request.

EC127-F-1 XXX-3C-2\*xxP G-A

贴板类型  
 SM1: Pin 1 朝下  
 SM2: Pin 1 朝上

单排芯数  
 01~50P

塑高  
 4.3: 4.30mm

电镀  
 G: 镀金Gold Flash  
 1G: 镀金1u"  
 3G: 镀金3u"  
 (镀金可订制)

公差:	版次:	A	 <b>易芯精密科技(浙江)有限公司</b> Easychips Precision Technology (Zhejiang) Co., Ltd.	型号: EC127-ISMx-3C-1*xxPG-A 描述: 1.27单排贴板排母	签名	日期
. X ±0.35	比例:				绘图:	
. XX ±0.25	单位:	mm	确认:			
. XXX ±2°	页码:	1/3	审核:			
LNLB	图号:					