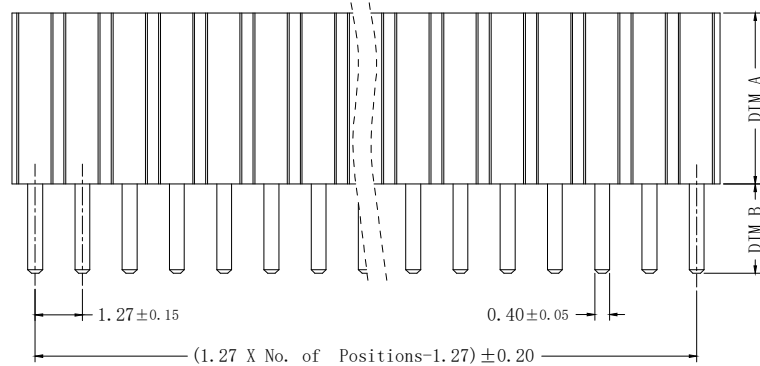
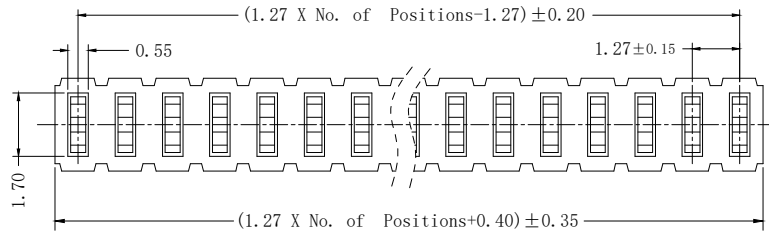


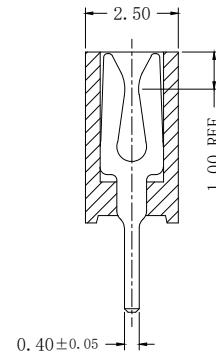
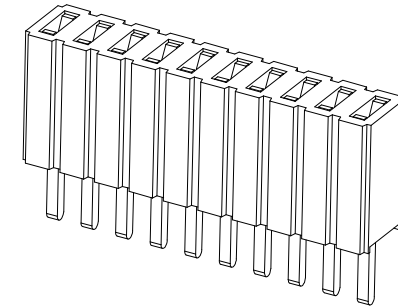
版次	变更内容	审核	日期



弯曲度: 1\*02P ~ 1\*20P 0.30 MAX.  
 1\*21P ~ 1\*35P 0.40 MAX.  
 1\*36P ~ 1\*50P 0.50 MAX.

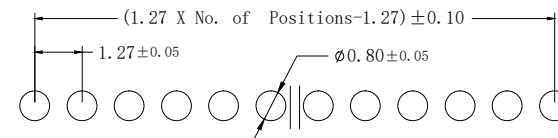
EC127-F-1S-Y-1\*xxP X-A /B

单排芯数: 01~50  
 脚长: 2.4: 2.40mm  
 塑胶高度: 4.6: 4.60mm  
 接触电镀:  
 G: 镀金Gold Flash  
 1G: 镀金1u"  
 3G: 镀金3u"  
 10G: 镀金10u"



### 技术参数: SPECIFICATIONS

额定电流 (Current Rating): 1A  
 绝缘电阻 (Insulation Resistance): 1000MΩ Min.  
 接触电阻 (Contact Resistance): 20m Ω Max.  
 额定电压 (Dielectric Withstanding Voltage): AC 500V  
 工作温度 (Operating Temperature): -40°C ~ +105°C  
 最大加工温度 (Max Processing Temp): (230°C for 30~60 seconds)  
 (260°C for 10 seconds)  
 接触材料 (Contact Material): 黄铜(Brass), THICKNESS 0.40mm  
 塑胶材料 (Insulator Material): 尼龙(Nylon)-9T, UL 94V-0, 颜色:黑色  
 接触电镀 (Contact Plating): 镀金 (Gold plated)



Recommended PCB Layout

公差:	版次:	A			<b>易芯精密科技(浙江)有限公司</b> Easychips Precision Technology (Zhejiang) Co., Ltd.	型号: EC127-F-1S-Y-1*xxPX-A/B 描述: 1.27单排Y端直脚排母	签名	日期
. X ±0.35 . XX ±0.25 . XXX ±2° LNLB	比例:	mm					页码:	1/1
							确认:	
							审核:	